



The Type 1865 Compression Load Cell is a highly accurate sensor available in a wide range of load ratings from 50 up to 3000 Kgs.

- **High Accuracy**
- **Industrial Test and Weighing Applications**
- **Easy to install**
- **Sealed Against Dust and Water**
- **Suitable for use in Hazardous Areas**

This versatile Load Cell is well suited to a number of Industrial applications including Hopper and Silo Weighing and incorporation into Test Rigs.

Generally the 1865 is simply bolted into position through its base plate. The load is applied via a dome-shaped button on the top of the cell which greatly reduces the effect of offset loads. The base plate and body of the cell are manufactured from stainless steel and sealed against the ingress of dust and water, allowing use in hostile environments. The Load Cell may be considered as simple apparatus permitting use in potentially explosive atmospheres when used with the company's intrinsically safe instrumentation.

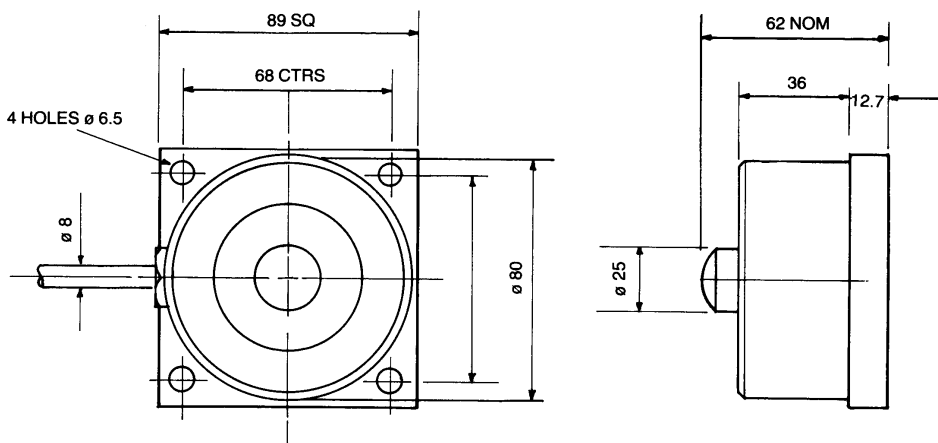
The type 1865 is fully compatible with Strainstall's range of control and readout equipment and is supplied with a full certificate of calibration.



Typical Specification

Rated Load	50, 100, 150, 250, 400, 600, 1000, 1500, 2000, 2500, 3000Kg
Proof Load	150% of rated load
Ultimate Load	300% of rated load
Rated Output	1.5mV/V nominal. Cells supplied in sets will have outputs matched to $\pm 0.25\%$
Recommended Excitation Voltage	10V
Maximum Excitation Voltage	15V
Zero Balance	$\pm 2\%$ of rated load
Bridge Resistance	700 ohm nominal
Insulation Resistance	>2G.Ohm @ 100V
Accuracy	$\pm 0.05\%$ of output at rated load, maximum $\pm 0.09\%$. As calibrated in a BS EN ISO 7500-1 test machine traceable to National Standards.
Non-Repeatability	0.05% of rated load
Zero Temperature Coefficient	$\pm 0.01\%$ of rated load per $^{\circ}\text{C}$.
Span Temperature Co-efficient	$\pm 0.035\%$ of reading per $^{\circ}\text{C}$.
Maximum Operating Temperature Range	-20 to $+80^{\circ}\text{C}$.
Compensated Temperature Range	0 to $+60^{\circ}\text{C}$.
Electrical Connection	Standard 3 metres 4 core screened cable, nominal diameter 8mm. Red +ve Supply. Green +ve Signal. Blue -ve Supply. Yellow -ve Signal.
Weight	Approx 2 Kgs depending on rating.
Environmental Sealing	Equivalent to IP67.

Note: Where particular requirements are critical or load cells of a higher specification are required, we would be delighted to assist.



Dimensions in mm.

Due to continuous development, Straininstall UK reserve the right to change specification without notice.

STRAININSTALL's team of experienced engineers operates from offices in Cowes, Bath and Aberdeen (UK) and Tønsberg (Norway). For further information, please contact:

Straininstall UK Ltd.
9-10 Mariners Way
Cowes
Isle of Wight PO31 8PD
United Kingdom

Tel: +44(0)1983 203600
Fax: +44(0)1983 291335
Email: sales@straininstall.com

www.straininstall.com