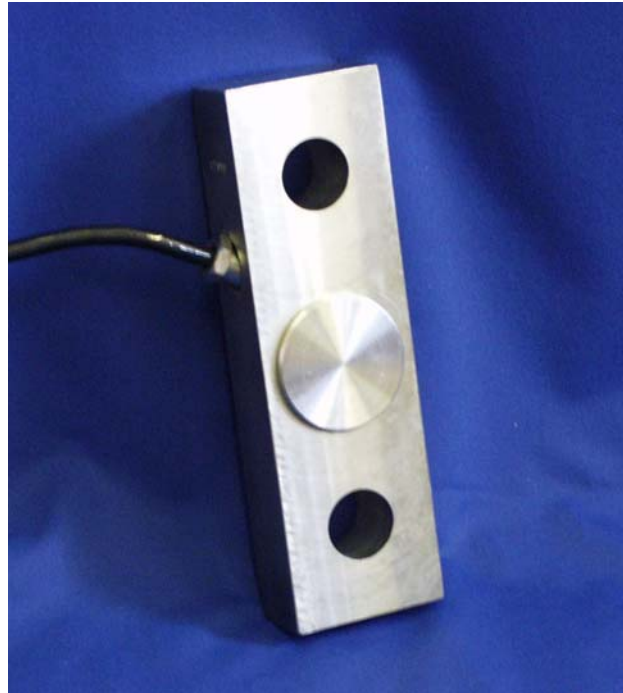




Straininstall

THE WORLD of **load measurement and stress analysis**

Product Tensile Link Load Cells



The Tensile Link Load Cells are the proven solution to a requirement for a simple, reliable, accurate and economic method of measuring a wide range of weights and loads in tension.

- **Easy to install and use**
- **Stainless steel construction for all environments**
- **Robust construction to withstand arduous use**

The 5200 range of Tensile Links are manufactured from high quality stainless steel and sealed to IP67 to provide a load cell device equally suitable for general workshop application and the most arduous conditions.

The standard capacities range from 2 to 100 tonnes and are usually available from stock, however larger capacities and custom designs are also available.

A range of displays to complement the Tensile Link include hardwired telemetry, handheld, wall mounting and signal conditioning to provide inputs to PLC's, process control and safety systems. They are supplied with a full calibration certificate.

Options available on request include plug and socket cable extension, carrying cases (up to 20 tonne rating) and Telemetry Links.

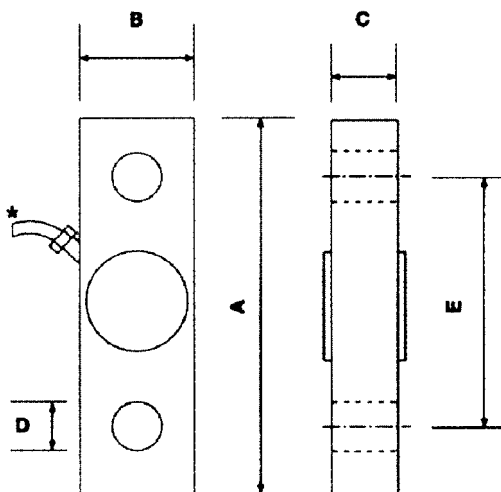


Typical Specification

Rated Load	2, 5, 10, 20, 50, 100 tonnes
Proof Load	150% of rated load
Nominal Output	1.5mV/V
Recommended Excitation Voltage	10V
Maximum Excitation Voltage	15V
Bridge Resistance	700 ohm nominal. Full bridge.
Operating Temperature	-20 to +80°C.
Accuracy	Typically better than $\pm 0.25\%$ of rated load. As calibrated in a BS EN ISO 7500-1 test machine traceable to National Standards.
Non-Repeatability	$\pm 0.05\%$ of rated load
Zero Temperature Coefficient	$\pm 0.01\%$ of rated load per °C
Span Temperature Coefficient	$\pm 0.035\%$ of rated load per °C
Electrical Connection	2 to 10t links are fitted with 4 metres 4 core screened polyurethane sheathed cable. 20-100t links are fitted with plug and socket complete with 4 metres 4 core screened polyurethane sheathed cable as standard. Red +ve Supply. Green +ve Signal. Blue -ve Supply. Yellow -ve Signal.
Environmental Sealing	Equivalent to IP67.

Note: Where particular requirements are critical or load cells of a higher specification are required, we would be delighted to assist.

Rating Tonnes	"A" mm	"B" mm	"C" mm	"D" mm	"E" mm	Unit Weight Kg
2	155	50	20	17	101	1
5	200	60	32	26	130	3
10	260	80	46	37	170	8
20	360	112	65	52	240	21
50	460	130	90	72	300	43
100	620	180	130	97	420	116



STRAININSTALL's team of experienced engineers operates from offices in Cowes, Bath and Aberdeen (UK) and Tønsberg (Norway). For further information, please contact:

Straininstall UK Ltd.
9-10 Mariners Way
Cowes
Isle of Wight PO31 8PD
United Kingdom

Tel: +44(0)1983 203600
Fax: +44(0)1983 291335
Email: sales@straininstall.com

www.straininstall.com