

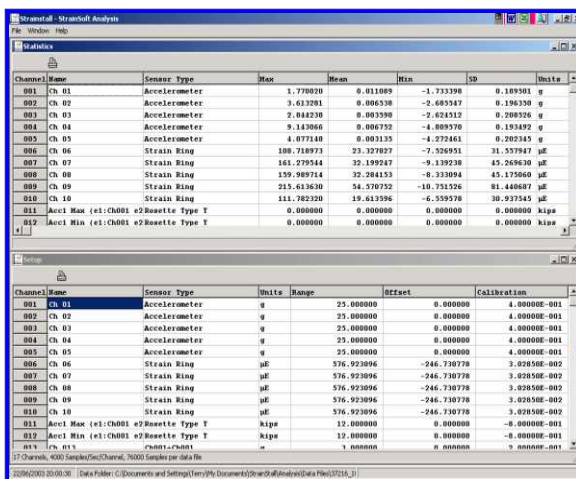
Straininstall StrainSoft is a software package that takes data from data acquisition systems and analyses and presents the results in a graphical, easy to interpret format. It has been designed specifically for structural testing by Straininstall experts who have utilised their many years of experience in monitoring and testing to create this user friendly program. It accepts data from Straininstall Data Acquisition systems, but can also be configured to take information from any other systems with data and set up files that are available in ASCII format.

StrainSoft shows a complete record of every test, including sensor type, the units of measurement, range, offset and calibration factors, maximum, mean and minimum recorded values over the entire test, standard deviation and the status of the file.

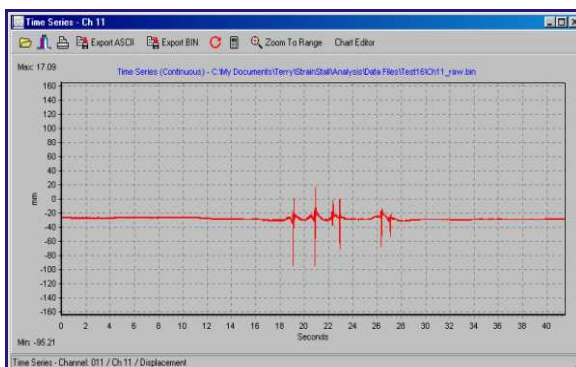
Other functions include:

- File functions with constant factors
- Multiple file arithmetic
- Filtering
- Differentiation
- Spike removal
- Batch analysis
- Fatigue analysis
- Strain gauge rosette analysis

All charts can be easily customised and are set up to allow the user to personalise the look of the Time series, Channel series, FFT/PSD and the Time at Level charts.



Channel	Name	Sensor Type	Max	Mean	Min	Std	Units
001	Ch 01	Accelerometer	1.778020	0.011089	-1.733398	0.189301	g
002	Ch 02	Accelerometer	3.612081	0.006510	-2.682547	0.194350	g
003	Ch 03	Accelerometer	2.048238	0.003588	-2.021512	0.200220	g
004	Ch 04	Accelerometer	5.143066	0.006732	-4.005370	0.153492	g
005	Ch 05	Accelerometer	4.077140	0.003135	-4.272461	0.202345	g
006	Ch 06	Strain Ring	408.718971	23.127827	-7.526951	31.557947	µε
007	Ch 07	Strain Ring	161.279744	32.199217	-9.139238	45.260630	µε
008	Ch 08	Strain Ring	155.989714	32.284153	-8.333094	45.175060	µε
009	Ch 09	Strain Ring	215.613630	34.578752	-10.731526	81.440687	µε
010	Ch 10	Strain Ring	111.782320	19.613596	-6.559578	30.937345	µε
011	Accl Max (e1:CH001 e2:Rosette Type I		0.000000	0.000000	0.000000	0.000000	klips
012	Accl Min (e1:CH001 e2:Rosette Type I		0.000000	0.000000	0.000000	0.000000	klips



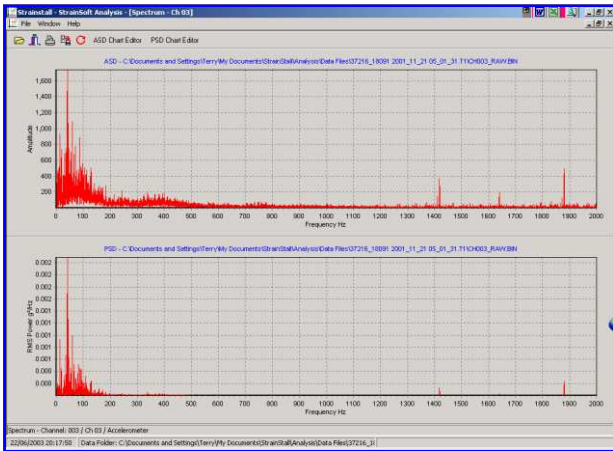
- All charts with zoom facilities & multiple charts per page
- All raw & processed files have statistics produced automatically
- Calculates virtual channels such as neutral axis, bending stress, average axial stress etc
- Converts to ASCII files for export
- Batch analysis
- Fatigue analysis
- Strain gauge rosette analysis

Straininstall UK Ltd
 9-10 Mariners Way
 Cowes
 Isle of Wight
 PO31 8PD

Tel: +44 (0)1983 203600
 Fax: +44 (0)1983 291335
 Email: sales@straininstall.co.uk
 Website: www.straininstall.com

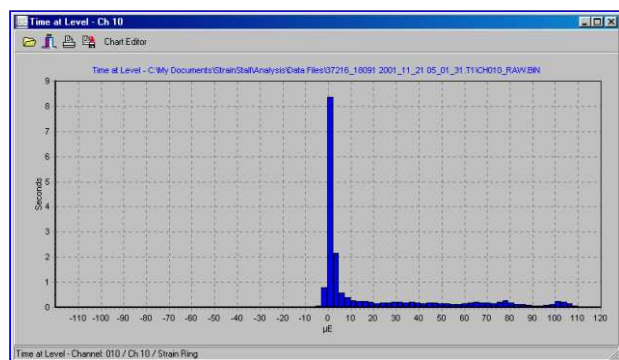
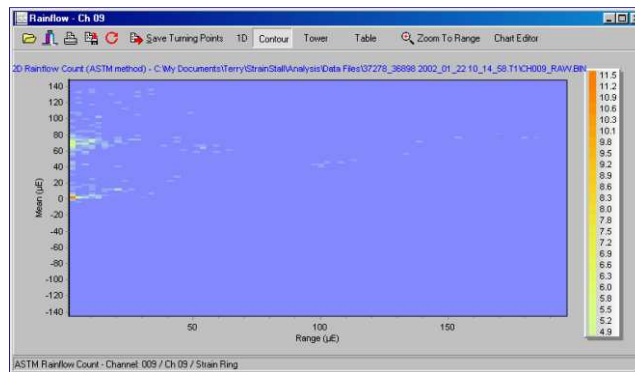


The World of Load Measurement and Stress Analysis



StrainSoft allows the user to create ASD (Amplitude Spectral Density) and PSD (Power Spectral Density) charts. A mathematical algorithm converts data recorded against time into data that can be displayed against frequency, which can be used to determine what frequencies are present in the recorded data and also their amplitude/power.

The program can also generate Rainflow counts for any given channel, which is a cycle counting algorithm that is widely accepted for use in fatigue analysis. Material S-N data is available and can be used to determine expected fatigue lives.



The software displays Time at Level information, which is a useful way of presenting data to show the time duration variation of the magnitude of a signal.

